

GX23TB VE09
220-240V 50Hz ~1

COMPRESSOR

Displacement (cm ³)	23.2
Diameter (mm)	34.93
Stroke (mm)	24.2
Net Weight (Kg)	17
Oil type	ISO VG 46 ESTER
Oil charge (cm ³)	500

MOTOR

Approximate Power (CV)	5/8
Voltage/Frequency (V/Hz)	220V 50Hz
Voltage range (V)	187-264
Code	-
Type	CSIR
Phase number	1 PH
Locked rotor current (A)	26.0
Main W. resist. at 25°C (Ω)	2.45
Start W. resist. at 25°C (Ω)	25.9

APPLICATION

Application	High/Mid. back pressure
Refrigerant	R134a
Evaporating (°C)	-25 to 10
Expansion	Capillar/Valve
Comp. cooling	Fan cooled
Max. ambient temp. (°C)	43

NOMINAL PERFORMANCE

	CYCLE C	CYCLE D
Cooling capacity (kcal/h)	1488	1780
Input power (W)	913	950
EER (kcal/Wh)	1.62	1.87
COP (W/W)	1.89	2.17
Current (A)	5.64	5.79

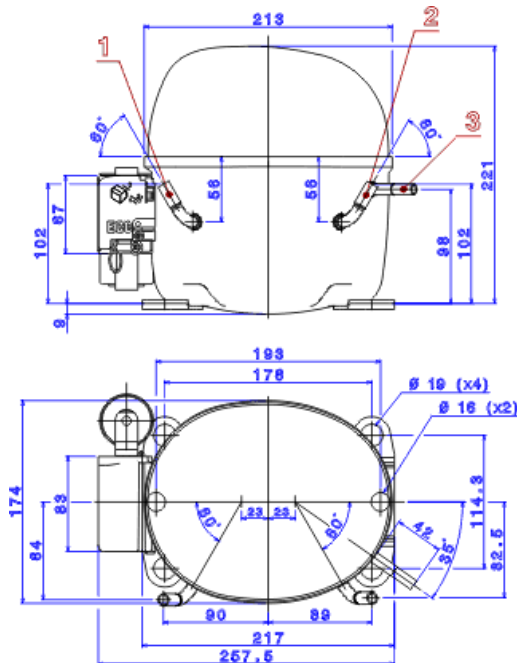
TEST CONDITIONS

	CYCLE C	CYCLE D
Evaporating temp. (°C)	5.0	7.2
Condensing temp. (°C)	55.0	55.0
Liq.t. entering expan. (°C)	55.0	46.0
Ambient t. and return (°C)	32.0	35.0
Tens/Freq (V/Hz)	220V 50Hz	220V 50Hz

ELECTRICAL COMPONENTS

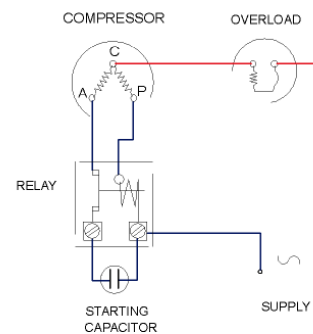
Relay	2014 180.	
Pick-Up	16,70 (A)	
Drop-Out	14,00 (A)	
Protector	MRA38152	T0260
Current (A)	27.5	22.0
Time check (seg)	2,8-5,2	7,5-14
Disc temp. (Open/Close) (C)	105.0 / 52.0	105.0 / 52.0
Starting capacitor (μF/V)F/V)	72- 88 / 330	

DIMENSIONS AND ELECTRICAL DIAGRAM



DESIGNATION	INTERNAL DIAM. (MM)
1 Service	8,1
2 Suction	8,1
3 Discharge	6,5

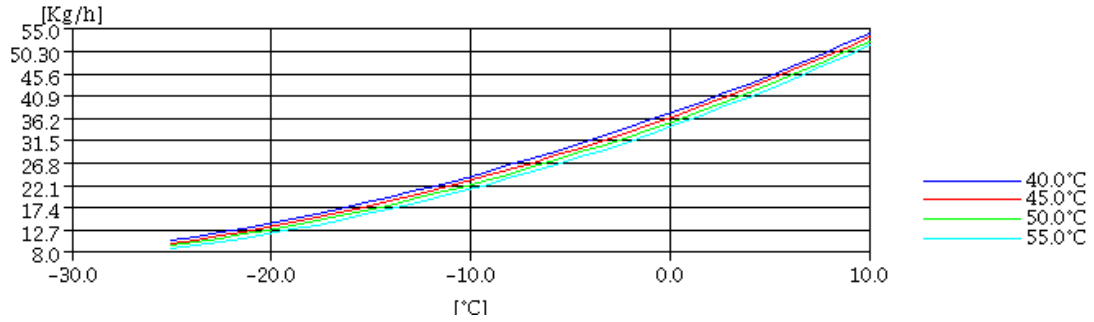
CSIR



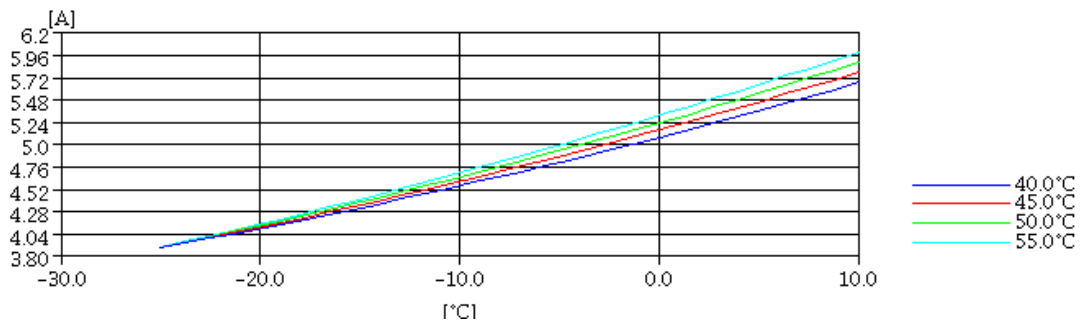
TEST CONDITIONS

Voltage/frequency	220V 50Hz
Ambient t. and return	35 °C
Liq.t. entering expan.	Subcooling 9 K

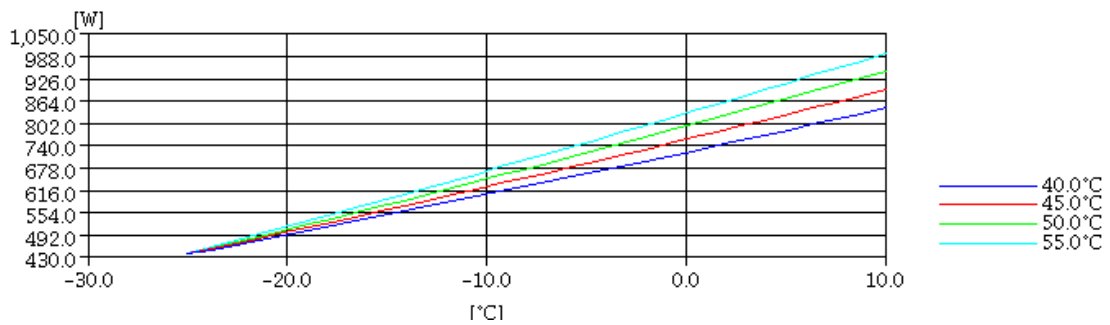
MASS FLOW



INTENSITY



CONSUMPTION



COOLING CAPACITY

